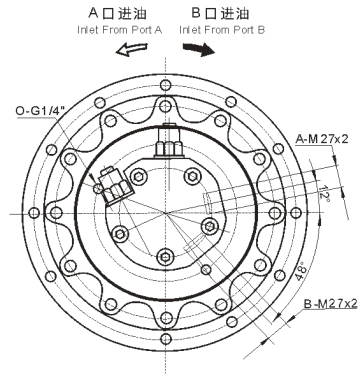
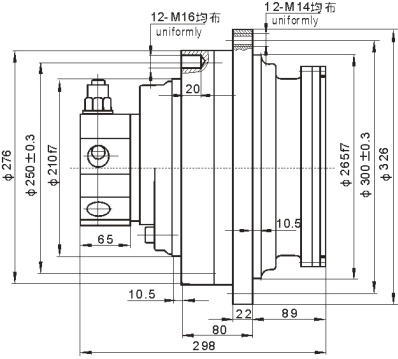


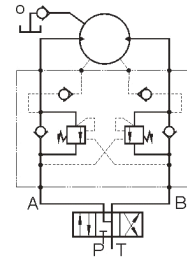
XZ2.5A 系列



型号 TYPE	扭矩torque(N.m)		转速 范围 speed (r/min)	传动比 reduction ratio	压力pressure(Mpa)		总排量 total displacement (ml/r)	液 压 马 达 hydraulic motor		总重(kg) gross weight	适用机重(吨) approx. weight of machine(ton)
	额定 Rated	最高 Max.			额定 Rated	最高 Max.		型号 TYPE	排量(ml/r) displacement		
XZ2.5A-1200D1202002	3100	3880	1-130	6	20	25	1146	AKS05-200D1202002	191	55	4-5
XZ2.5A-1000D1202002	2670	3320	1-140	6	20	25	996	AKS05-170D1202002	166	55	4
XZ2.5A-900D1202002	2430	3040	1-150	6	20	25	906	AKS05-150D1202002	151	55	3.5
XZ2.5A-800D1202002	2080	2590	1-150	6	20	25	774	AKS05-130D1202002	129	55	3
XZ2.5A-700D1202002	1850	2300	1-160	6	20	25	690	AKS05-110D1202002	115	55	2.5
XZ2.5A-520D1202002	1380	1730	1-180	6	20	25	516	AKS05-90D1202002	86	55	2
XZ2.5A-450D1202002	1190	1490	1-200	6	20	25	444	AKS05-75D1202002	74	55	1-2
XZ2.5A-570D1202002	1550	1940	1-260	3	20	25	573	AKS05-200D1202002	191	60	4-5
XZ2.5A-500D1202002	1335	1660	1-280	3	20	25	498	AKS05-170D1202002	166	60	4
XZ2.5A-450D1202002	1215	1520	1-300	3	20	25	453	AKS05-150D1202002	151	60	3.5
XZ2.5A-390D1202002	1040	1295	1-300	3	20	25	387	AKS05-130D1202002	129	60	3
XZ2.5A-350D1202002	925	1150	1-320	3	20	25	345	AKS05-110D1202002	115	60	2.5
XZ2.5A-260D1202002	690	865	1-360	3	20	25	258	AKS05-90D1202002	86	60	2
XZ2.5A-220D1202002	595	745	1-400	3	20	25	222	AKS05-75D1202002	74	60	1-2

注:

- ① 额定扭矩是在考虑系统压力损失1MPa和行星减速器效率以及液压马达机械效率的情况下计算，并对末位数圆整得来。
- ② 马达泄漏口○需直接回油箱。



液压原理图